



ARX
MALL



A modern and free thought embarked in real estate development & investment field led by a group of great consultants and specialized professors where their experience extends to 37 years of creativity and continuous success, Bonyan made a significant difference in a short period in real estate world in New Cairo particularly in 5th Settlement, as Bonyan became one of the biggest real estate companies in New Cairo.

Prime location, perfect investment



ARX
MALL

ARX mall a premium project in a prime location for a splendid experience and a guaranteed investment. A 4500 square-meter building of 3 floors with 48 units for offices, stores, restaurants, and cafes.

ARX mall is located directly on Northern 90 st. in one of the most powerful commercial districts in New Cairo, the commercial area In front of the Platinum club.

ARX mall is easily accessible from the city's most noted landmarks, making it an ideal choice for a client constantly on the move.



ARX MALL | OVERVIEW

- Indoor BUA 5300 M².
- Outdoor 860 M².
- 3 floors
- 2 floor underground
- 48 units
- Food and beverage (12)
- Retail (18)
- Offices (18)
- Parking spots (129)
- Storage 1000 M².

LOCATION ACCESSIBILITY

ARX mall is located in a prime location directly on Northern 90 st. , the commercial area In front of Platinum club, one of the most promising commercial districts in New Cairo.

ARX mall is easy accessible from the city's most noted landmarks, which are only a short drive away, make it an ideal choice for a client that is constantly on the move. ARX mall is located:

- 3 min To Cairo Suez Road
- 2 min To Mohamed Bn Zayed Road
- 2 min To Rehab City
- 5 min To Mid Ring Road
- 5 min To New Capital
- 12 min To Cairo Air Port
- 12 min To Madinaty & Sherouk City



Cairo-Suez highway

El-Rehab
El Rehab-
Mostasmrin
Gamal Abdel Nasser St.



Mostasmrine - Shamalia

Northern 90 St.

Club St.

South 90 St.



Al - Louts

New Capital >>>

Mohamed bn Zayed

El Narges-El
Mostasmrin
Ganobia

El - Narges

Facilities

ARX
MALL



Fire fighting
System



Backup
Generator



6 passenger
elevators



Water
Tanks



Visitor management
Services



Cargo
elevator



Central
Air Conditioning



Security
System



Central Power
Supply



Common
Meeting Room



Under Ground
Parking



Luxury
Plaza

Our Partners

ARX
MALL



*Architectural
Consultant*

Founded in 1996, Land Consultant has Played a principal role in providing Architectural and Engineering Consulting services in Egypt.

Land Consultants a multidisciplinary private, independent consulting firm that accomplishes project services from inception through construction, utilizing effectively and efficiently the resources of the integrated professional staff that it proudly employs.



*Property and Facilities
Management*

Brain2Fact Group founded in 2005, with a vision in mind, to identify the gaps in the MENA region markets and provide satisfactory solutions while leaving a remarkable mark.

Brain2fact group went into rapid growth and expanded to be holding now 5 pioneering companies in many different fields, which allows the group to expand geographically from its headquarters in Egypt to establish a solid presence in the UAE, Kuwait, and Belgium.



*Structural
Consultant*

- Participating in supervising many of the academic theses for masters and doctoral degrees in the specialization of structural engineering.

- Participation in arbitration and discussion of many academic messages for master's and doctoral degrees.

- Carrying out, alone or as a participant, the work and publication of more than 30 papers published in local and international scientific journals and conferences.



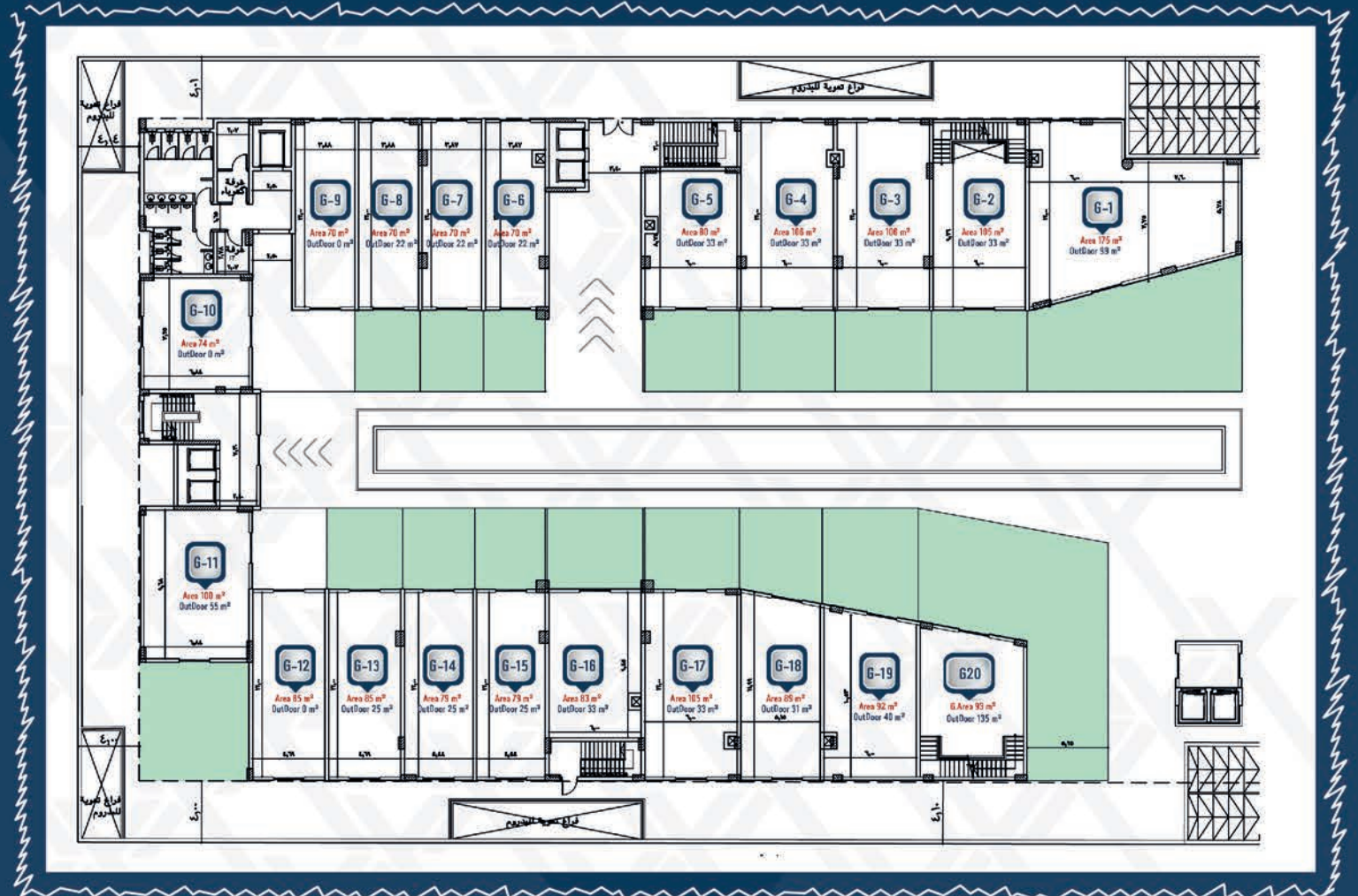
*Electro-mechanical
Consultant*

ProMEP a Consultation Company, providing its quality services to customers in the Middle East and Africa in Electro-Mechanical studies and design.

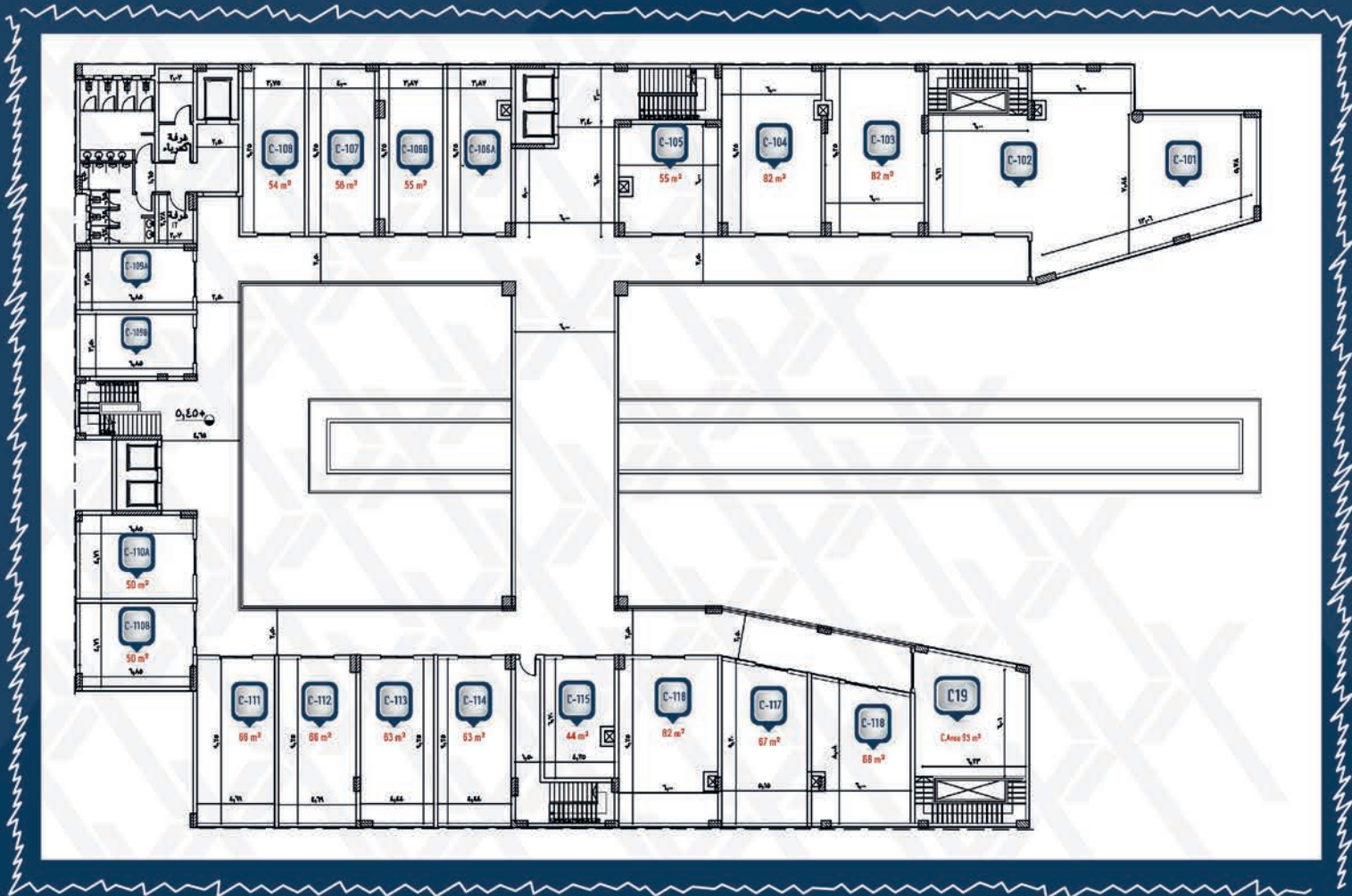
ProMEP was established to provide consulting services for the design; technical assistance, site supervision, and project management of Electro-Mechanical systems and facilities that assure client requirements are accurately interpreted into functional, economical, and aesthetically pleasing projects.



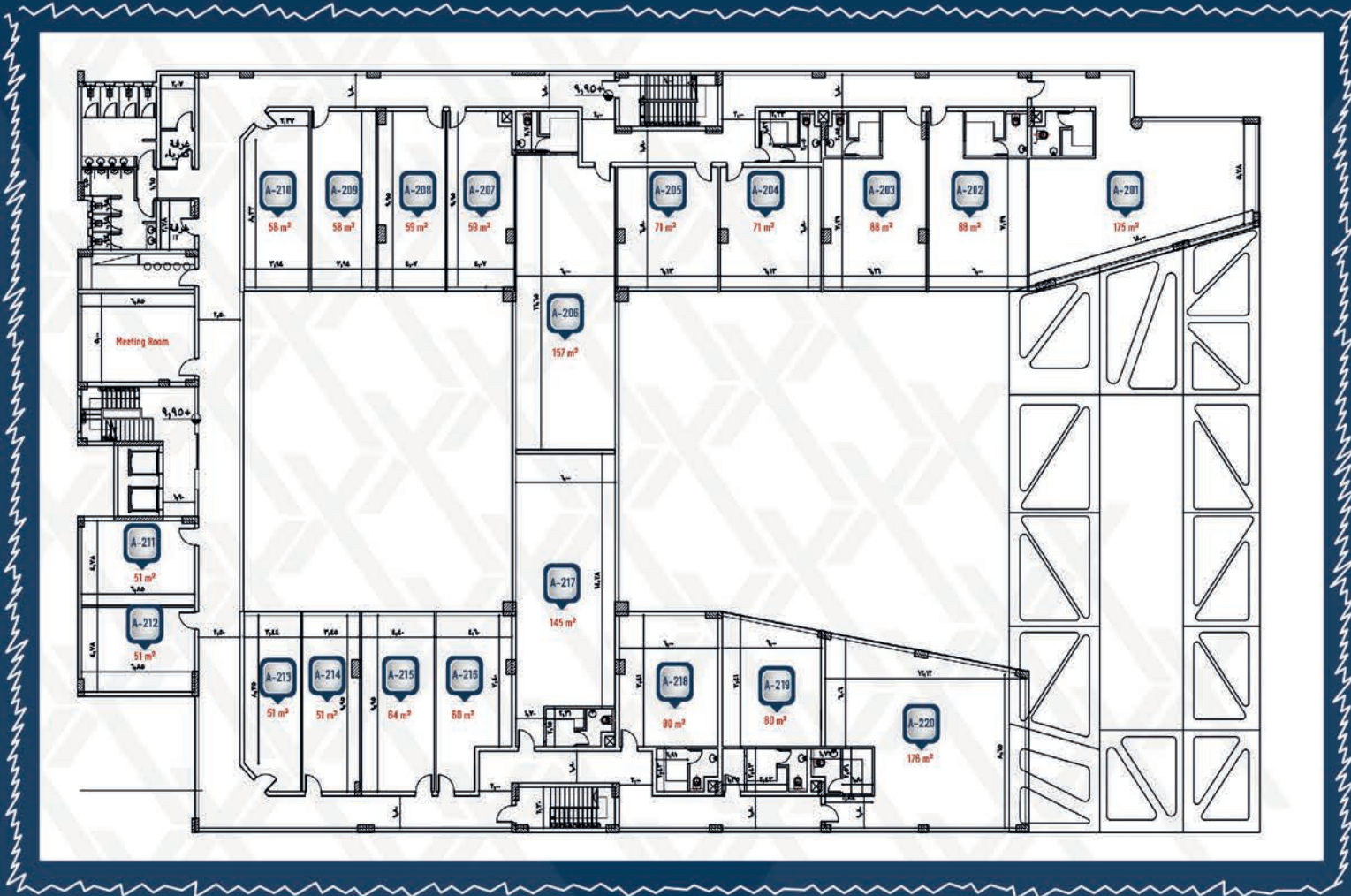
Ground FLOOR



First FLOOR



Second FLOOR







 127 El Shouyfath st. - District No.1 - The 5th Settlement

 www.bonyaneg.com  Bonyanegy

 www.arxmall.com  19084

The logo consists of a white house icon with a gabled roof and a small square window, positioned above the word "BONYAN" in a bold, white, sans-serif font. The letter "A" in "BONYAN" is stylized with a triangular cutout at its base.

BONYAN

 **19084**